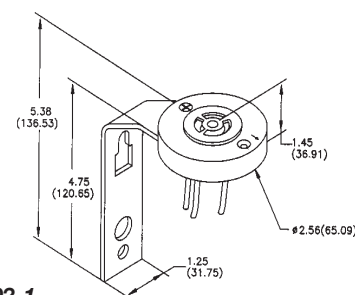
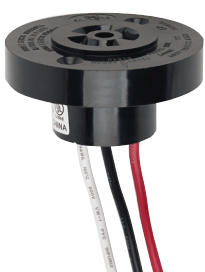
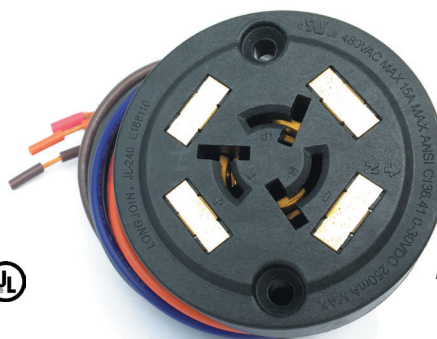


FPS476-71

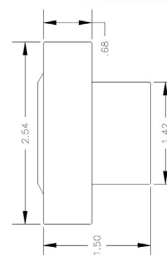


FPAT902-1

## ANSI C136.41 Compliant



FPAT902-DR-7



### 3-Pin Mounting Receptacles

A variety of locking-type receptacles are available to meet specific application needs. Receptacles are UL recognized and CSA certified, feature 18" No. 14 AWG color coded leads, and are rated for use up to 480V and 1800VA.

#### Model FPS476-71

Three pole locking-type receptacle with polycarbonate housing and wall mounting bracket 1/2"– 14 thread.

#### Dimensions:

- Socket: 2-11/16"H; 2-5/8" Dia.
- Nipple: 1/2"– threaded; 5/ 8"L
- Bracket: 4-3/4"H; 1-1/4"W

#### FPAT902-1

Receptacle assembly only.

#### Dimensions:

- Socket: 1-9/16" H; 2-9/16" Dia.

### Ordering Information (3-pin receptacle)

Model	Line Voltage	Load Rating		Bracket
		Tungsten	HID Ballast	
FPS476-71	up to 480V	15A max.	15A max	Includes Bracket
FPS476-81	up to 480V	15A max.	15A max	Includes Bracket
FPAT902-1	Receptacle assembly only.			No Bracket

UL recognized. CSA certified.

### 7-Pin Dimming Receptacle

FPAT902-DR Series is ANSI C136.41 compliant dimming receptacle.

The receptacles have electrical and mechanical interconnection between an ANSI C136.41-2013 photocontrol and dimmable LED lighting fixture.

7-pin receptacle required for all LED Dimming applications (see Dimulator on pages 14-15)

### Specifications

Power Lead Gauge:	AWG#14
Lead Length:	12"
Certification:	cUL

See page 14-18 for Dimming Photocontrols

### Ordering Information (7-pin receptacle)

Model	Line Voltage	Number of Contacts	Power Lead Grade	Load Rating	
				Tungsten	HD Ballast
FPAT902-DR-7	Up to 480VAC	7-Pin	AWM1015 600V 105C	15Amp Max	15Amp Max

Units include rubber gasket